



2023

Annual Report



 **The Center**  
for Empowerment and Education

# About Us

For victims of interpersonal violence (IPV), The Center for Empowerment and Education (CEE) provides support services in the form of no cost counseling and advocacy, crisis intervention, and emergency shelter. We empower individuals to find their voice and choose their path toward healing as they rebuild their lives. We are preventing and reducing IPV in the community through prevention education, awareness and are reducing trauma by stopping violence from manifesting in the first place. Everyone deserves to live a life free from violence. We are here to help 24 hours a day, 7 days a week, 365 days a year.

Our mission is to break the cycle of interpersonal violence through empowerment, education, and support services utilizing inclusive, trauma-informed, and client-centered practices for all individuals in the community.

Our vision is to create safer communities free from interpersonal violence for all individuals in Northern Fairfield and Southern Litchfield Counties.

We serve the needs of individuals and families in the Northern Fairfield and Southern Litchfield County communities of Bethel, Bridgewater, Brookfield, Danbury, New Fairfield, New Milford, Newtown, Redding, Ridgefield, Roxbury, and Sherman.

## What is interpersonal violence?

Interpersonal violence refers to any abusive act by a person or persons against another, including sexual assault, stalking, domestic violence, and human trafficking. IPV is rooted in power and control. IPV affects people of all identities and backgrounds, but people in marginalized communities face unique barriers to accessing/receiving support.

# Guiding Principles

- **Empowerment:** Empowering individuals to find their voice and choose their path towards healing as they rebuild their lives from interpersonal violence.
- **Education:** Preventing and reducing interpersonal violence in the community through prevention education and awareness.
- **Survivor Centered:** Uplifting the voices of lived experience to impact systemic change.
- **Social Change:** Actively working to shift the culture that allows interpersonal violence to thrive.
- **Collaboration:** Building safer communities through collaboration centered on diversity, equity, and inclusion.



## CEE Leadership Team

**Pictured from left to right:**

**Samantha Flynn**

*Chief Development Officer*

**Ashley Dunn**

*President & CEO*

**Abilene Ribeiro**

*Director of Client Support Services*

**Cara During**

*Director of Community Impact*

**Bill Montero**

*Chief Finance & Administrative Officer*



**CEE staff in attendance  
at our Annual Dinner**

# From the President and CEO

---

It is hard to believe that another year has passed, and what a year it has been. This year has been a true Spark for Change at The Center for Empowerment and Education. Not only did we embrace change, but we also celebrated it. This past year, we took inventory of who we are as an organization and how we fit into the community. We began to identify how we want to evolve to meet the ever-changing needs of the clients and communities we serve.

As we dug into who we are, we unearthed the reality of our work and underlying themes of who we are at our core. We empower individuals to find their voice and choose their path toward healing as they rebuild their lives from interpersonal violence (IPV). We are preventing and reducing IPV in the community through prevention education, awareness and are reducing trauma by stopping violence from manifesting in the first place. Simultaneously, we are elevating the voices of those with lived experience within our organization and for the clients we serve.

Throughout this process, we reimagined what our hiring and professional development efforts should look like to ensure that we have the resources to meet the needs of our programs, services, and clients. We increased bilingual and multilingual positions throughout all programs and services to ensure that clients coming to CEE can speak in their primary languages of Spanish and Portuguese. We embodied and honored intersectionality in our own workplace, understanding that we as employees are not one-dimensional but have varying needs as individuals. We created pathways to professional development, created a pipeline for new employees through current volunteers and interns, and looked first to our current talent for any leadership and promotional opportunities before exploring external candidates.

As we gained a new understanding of the changing needs of the community and clients we serve, we took the opportunity to realign our programs and services to meet those needs better. We developed the Community Impact Team that focuses on outreach to the community, prevention education classes to youth and adults, professional training to local businesses, and enhanced community engagement opportunities through revamped volunteer opportunities in both direct service and non-direct service capacities. On the direct services side of our work, we shifted our language away from Victim Service programs to Client Support Services, understanding that each person we serve identifies differently from the next person and might not want to be labeled utilizing victim language. While understanding that each client has a different experience from the next, we recognized that we needed to adjust how we helped clients navigate through their trauma by creating Bilingual Crisis Navigation positions that immediately help triage and connect clients to the right resources, safety plan, and ensure that they are aware of all their options, while empowering them to make decisions independently.

We sparked change internally, and that rippled into the community. We increased collaboration with other service providers in our region, created new opportunities for referrals for additional services, and developed new partnerships to help bridge service gaps in the community. We know that IPV is a public health emergency and that no one organization can solve community problems independently. It takes working together as a community to create long-lasting, impactful change. You are a part of a community that is developing solutions, working together, working with us, and sparking change. You are a part of why we believe we can turn our vision to create safer communities free from IPV into a reality. I cannot thank you enough for your continued support. It means the difference between being able to provide our no cost services in our community.

With gratitude,



**Ashley Dunn, MS, MFT, NCC  
President and CEO**



On January 10, 2023, CEO, Ashley Dunn, CCADV, and several member organizations joined Senator Blumenthal to acknowledge his efforts that led to an essential increase in VAWA (Violence Against Women Act) funds at the federal level.

# CEE Leadership

## Board of Directors

### Chairperson

Eric J. Eggan, Esq.

### Secretary

Glori Norwitt, Esq.

### Board Members

Lori Berisford

Susan Gessner

Amanda Bristol

Dr. Evan Hack

Erin Byrne

Greg Pepin

Courtney Elliott

Vicki Taylor-Bloch

### Vice Chairperson/ Development Chair

Elaine Cox

### Treasurer

Kelcey Hoyt

Dr. Paul Fiedler

## Advisory Council



Deborah Backes

Barbara R. Manners

Brenda Berta

Nancy Murphy

Wendy Wo Beurket

Mark J. Nolan

Rebecca Ciota, Esq.

Kathleen Pape

Pamela Chapman

Karen Ross

LouAnn Daprato

John Royce

Paul P. Dinto

Stacy Singer

Hillel Goldman, Esq.

Paul Steinmetz

Kathy Graham

Allison Stockel

Nancy Hawley

Eileen Walker



Not pictured: Evan Hack and Glori Norwitt

**Co-Chairs**

Eric J. Eggan, Esq., Dr. Paul Feidler, & Greg Pepin

**Council Members**

- |                            |                       |
|----------------------------|-----------------------|
| Dr. William Begg III       | Matthew Knickerbocker |
| John Berisford             | Joe Loth              |
| Senator Richard Blumenthal | Rudy Marconi          |
| David Cappiello            | Gary Michael          |
| Ethan Carey                | Robin Montgomery      |
| Dan Carter                 | Elvis Novas           |
| Dr. Joseph Cleary          | Stephen G. Rosental   |
| Paul Dinto                 | John Royce            |
| Monte Frank                | Thomas Saadi          |
| Hillel Goldman             | Andy Sachs            |
| Irv Goldstein              | Fred Savenelli        |
| Noel Hord                  | Jeremy Stein          |
| Dr. Reed Idriss            | Paul Steinmetz        |

**Men's Council**



# Client Support Services

## How We Helped in the Past Year

### 24-Hour Hotlines

- Our two 24-hour hotlines are dedicated to domestic violence and sexual assault crisis calls.

### On-Site Emergency Response

- In hospitals, police departments, courts, and other community partners, CEE provides on-site support and advocacy.
- We offer a safe and secure emergency shelter environment for individuals and families fleeing domestic and sexual violence. Individuals and families residing in our facility are provided with case management, advocacy, and re-housing assistance.

### Crisis Navigation and Advocacy

- Our Family Violence Victim Advocates and Crisis Navigators are available to help victims of interpersonal violence navigate the civil and criminal legal system surrounding intimate partners, parents, children, someone they have or have had a dating relationship with, cohabitants in a spousal or sexual relationship, or the parent of their child(ren).
- We can help explore options and provide legal advocacy in the form of understanding Protective Orders, Temporary Restraining Orders, and provide connections to divorce and custody resources. Our Family Violence Victim Advocates are here to ensure that a victim's voice is heard throughout the court process.
- We also provide client referrals to other community resources.

### Ongoing Support

- We offer individual short-term counseling for adults and children to navigate the trauma of violence. We also offer ongoing support groups for victims of interpersonal violence. Support groups are offered in-person and virtually at various locations.
- CEE helps victims defuse an immediate crisis and implement safety plans, ensuring their health and safety needs are met.

### Walk-In Services

- CEE offers walk-ins/open appointments at our main office located at 2 West Street, Monday through Friday, 9am-5pm.



**Statistics tell us about the reality of what is happening in our community. The numbers below represent real people – our family, friends, neighbors, and co-workers.**

<b>Domestic Violence (DV) Clients</b> Total DV Services Provided	<b>3,913</b> <b>25,823</b> service contacts
<b>Sexual Assault (SA) Clients</b> Total SA Services Provided	<b>541</b> <b>4,217</b>
<b>Resource Services Clients (RS)</b> (CEE connected clients to external resources) Total Resource Services Provided	<b>564</b> <b>703</b>
<b>Client Total (DV, SA, RS)</b> Total Services Provided (DV+SA+RS)	<b>5,018</b> <b>30,743</b>

## Program Statistics

### Patricia House 24-Bed Emergency Shelter

**51** individuals fleeing from abuse received safe and secure housing.

Adults – **28**

Children – **23**

**289** individuals were transported, relocated and/or sheltered to an undisclosed location.

### Housing Assistance

**112** individuals were housed independently by CEE's Rapid Rehousing Program.

### Legal Advocacy

(Our legal advocacy work is done from our offices at Danbury Superior Court, Danbury Police Department and Main Office)

**1,894** domestic violence victims were assisted in obtaining criminal and civil legal assistance including protective orders, restraining orders, visitation, housing, custody, and child support.

**373** sexual assault victims received criminal and civil advocacy support services.

**2,222** victims were provided with enhanced legal advocacy through the criminal justice and civil legal system.

# Client Support Services

*continued*

## Crisis Response

### Hotline & Crisis Calls

**2,573** calls required immediate crisis response and intervention (DV - 2,292, SA - 281).

### Multi-Interdisciplinary Team (MIT)

**93** families were accompanied by MITs for suspected child abuse and neglect cases.

### Medical Accompaniment

**112** victims were assisted in the hospital and on medical emergency calls.

### Lethality Assessment Program (LAP)

**597** LAP Screens were conducted by Law Enforcement in partnership with CEE.

**289** LAP Screens were identified as High Danger based on victim's responses.

**43** LAP identified victims continued services with CEE.



Abilene Ribeiro, Director of Client Support Services, and Attorney Patrice Hamilton. Greater Danbury Bar Association Law Day on May 5, 2023, when Patrice was recognized for her pro-bono services. Patrice, CEE thanks you!

# Community Impact

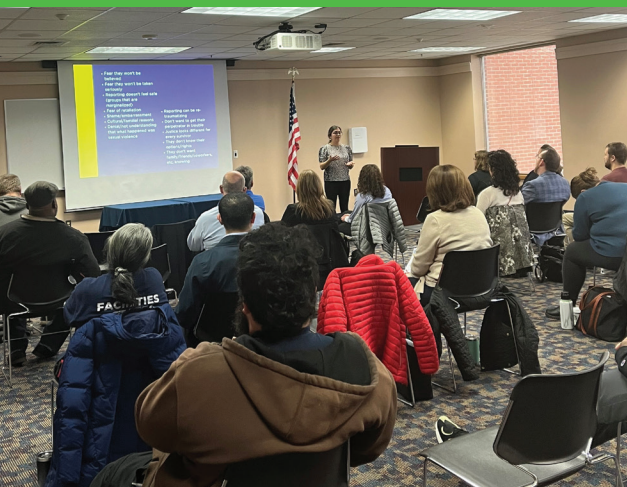
Our Community Impact team is responsible for CEE's prevention education and programming for youth, training for adults and professionals, volunteer programs, and campus services. This also includes legislative advocacy, communicating with the media/press, and cultivating and maintaining relationships with key community stakeholders and partner organizations.

**TOTAL COMMUNITY IMPACT PROGRAMS = 793**

**TOTAL UNDUPLICATED COMMUNITY IMPACT PARTICIPANTS = 18,083\***

\*Includes 522 school staff/faculty present during programs

## Prevention education, training, and outreach



CEE staff provides a professional training to school staff and faculty on how to support student survivors of interpersonal violence.

Our prevention education, training, and outreach services include programs in schools, organizations, local businesses, and the general community. Our education programs and trainings cover topics related to interpersonal violence such as healthy relationships, consent, boundaries, bystander intervention, trauma, and so much more. We tailor each program to the unique audience and age group. We provide education from ages 5 to 80. Our outreach services also include tabling at fairs, connecting with local resources, and providing CEE 101 information to the community. We provide training to professionals in the community that equips employees in their unique field of work to be able to better identify and support survivors of interpersonal violence.

# Community Impact

*continued*

## Campus services

Our campus services are provided mainly at our satellite office at Western Connecticut State University and include crisis intervention and support, individual counseling and advocacy, support groups, and education and awareness on campus. We also provide support at the Danbury campus of Naugatuck Valley Community College. We work collaboratively with the many different resources on campus to ensure students are aware of their rights and options if they ever experience interpersonal violence during their time at college. We also prioritize raising awareness through events and programs on various topics, including healthy relationships and consent, bystander intervention, and more.



CEE staff providing an education program for the WCSU Football Team on healthy relationships, consent, and bystander intervention.

## Program Disclosures

*A disclosure is any instance where a student shares that they have been impacted by interpersonal violence directly or indirectly. This can include when a student shares in the middle of class as we are discussing topics or if they come up afterwards to talk about a specific instance to seek support or guidance. The below disclosures we received were related to dating abuse, domestic violence, sexual assault, sexual harassment, bullying, LGBTQ+ issues, or mental health concerns.*

	K-12	College
<b>TOTAL</b>	<b>166</b>	<b>8</b>

## Volunteer Programs

Volunteers are the backbone of our organization, and we could not do what we do without their support. We offer the opportunity for volunteers to work with clients directly and become a “direct service” volunteer as well as the opportunity to become a “non-direct service” volunteer. All direct service volunteers undergo our 40+ hour certification training to become a state-certified domestic violence and sexual assault counselor per C.G.S. 52-146k.

## Volunteers & Hours

As an organization with an evolving and growing need, our volunteers help us to meet the high demand for our services, increasing capacity where it is otherwise full. Volunteers also help us to expand our services so that we can reach more individuals and families in our communities.

Client Support Service Volunteer Hours	Non-Direct Service Volunteer Hours
966	2,092

**TOTAL 3,058**

“Nothing feels better than to know that you have been there for a victim when they most need someone to hold space for them and advocate for them. It is the most fulfilling volunteer ‘job’ that I do. A staff member is always available to the volunteer whenever needed - just as a client is never left without assistance, neither are the volunteers.”

- Jean, Volunteer at CEE since 2019



CEE volunteers and a staff member at a Pride Month tabling event in Ridgefield.



Pictured from left to right: Cara Mackler, CEE Director of Community Impact; Jean Hartnett, CEE Volunteer and Abilene Ribeiro, CEE Director of Client Support Services. Volunteer Jean Hartnett was awarded as one of CCADV's First 100 Plus Class of 2023.

# Town by Town

## Town By Town

Town	Total
Bethel	2,216
Bridgewater	131
Brookfield	275
Danbury	10,325
New Fairfield	674
New Milford	798
Newtown	2,668
Redding	980
Ridgefield	2,567
Roxbury	83
Sherman	281
Out of State	290
Unknown	911
Other CT	902

These numbers reflect both direct service and prevention education individuals served.

**23,101**   
**Total Individuals served**

## Notes of Gratitude

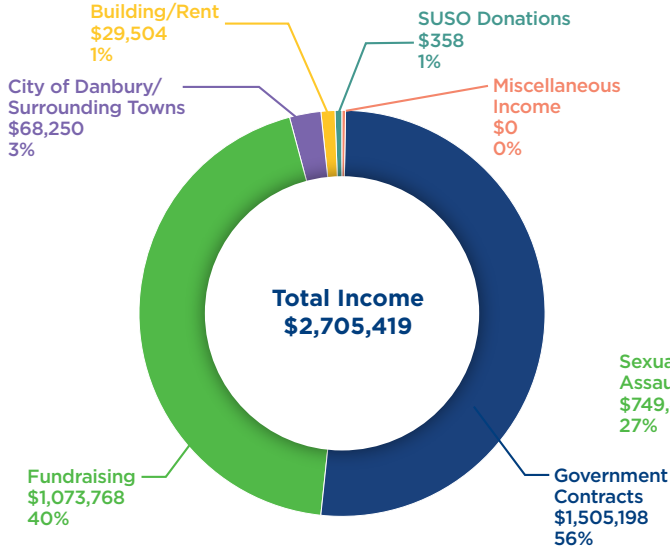
“I wanted to just thank you all at CEE for providing such great presentations to our 4th and 5th graders here at King Street! Our staff and students, both, enjoyed the presentations! We have received great feedback and have started having important conversations with our students. I will surely reach out again next school year. Thank you so much!” – Social Worker, Danbury Public Schools

“An unbelievable program that students can take away to apply life-long skills of understanding how to make appropriate choices. The presenters are engaging, compassionate and knowledgeable.” – Teacher, Newtown Public Schools

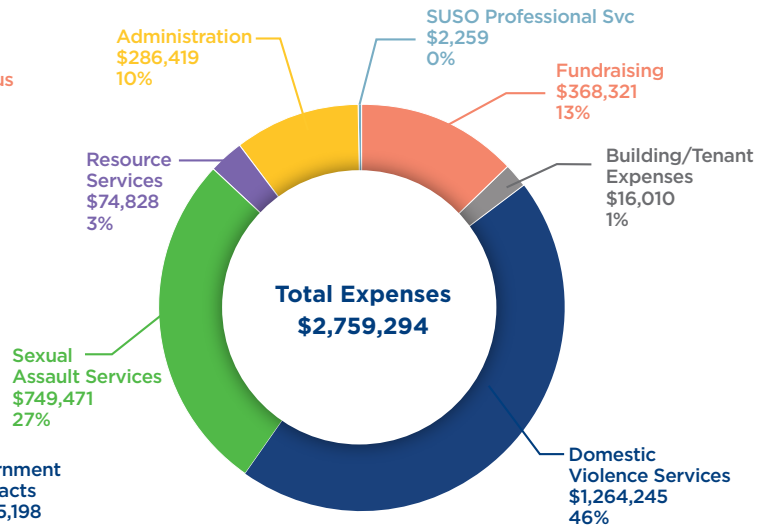
“I truly cannot thank you enough for what you did for me. Thank you for being so trustworthy. This was a difficult process and I felt very alone. You made it so much more tolerable and were very helpful. I feel a huge weight lifted and looking forward to moving on.” – Client

# Finance

**CEE  
FYE 2023 Income**



**CEE  
FYE 2023 Expenses**



\*Excludes non-cash depreciation of \$277,626.

## Save the Dates!

**16th Hearts of Hope Breakfast**  
Wednesday, March 6, 2024

**21st Annual Dinner**  
Friday, June 14, 2024

**SafeWalk**  
Weekend of October 4-6, 2024



Our complete donor and member lists can be found in the online version of our annual report at [www.thecenterct.org](http://www.thecenterct.org)

**Creating safer communities  
free from interpersonal violence.**



**The  
Center**

for Empowerment  
and Education

Sexual Assault Hotline: 203-731-5204 | Domestic Violence Hotline: 203-731-5206 | [www.TheCenterCT.org](http://www.TheCenterCT.org)

For more information contact us at [thecenter@TheCenterCT.org](mailto:thecenter@TheCenterCT.org)



Phone: 203-731-5200  
Fax: 203-731-5207



[thecenter@TheCenterCT.org](mailto:thecenter@TheCenterCT.org)



2 West Street  
Danbury, CT 06810

Creative design generously donated by ThinkSisu



# 2023 The Center Annual Report Donors

We thank you for your financial contributions that enable CEE to continue its important work to “create safer communities free from interpersonal violence.” Every effort has been made to list names accurately. Please contact the Development Office T (203) 731-5200, EXT. 237 if there are any errors or omissions and please accept our apologies. Again, we thank you for your continued support of CEE’s programs and services.

## Founder \$25,000+

Anna-Maria and Stephen Kellen Foundation  
The Betty and Leo Balzereit Foundation  
City of Danbury  
Colonial Automobile Group of Danbury  
Elaine and Kevin Cox\*  
Mithun Family Foundation  
Amy and Brendan Naughton  
Glori and Adam Norwitt\*

## Ambassador \$15,000+

Bedoukian Research  
Linde  
Little Engine Foundation  
The Robert G. and Marguerite M. Derx Foundation of New Fairfield, Connecticut  
The Ridgefield Thrift Shop, Inc.  
Savings Bank of Danbury  
Town of Bethel

## Leader \$10,000+

The Albert Wadsworth & Helen Clark Meserve Memorial Fund  
Almira Family Charity Foundation  
Anonymous  
Lori and John Berisford\*  
Erin Byrne and Robert Holmqvist\*  
Danielle and Scott Edwardson  
Courtney and Robert Elliott  
The George Link Jr. Charitable Trust  
Kelcey and Jeff Hoyt\*  
Christine and Philip Lodewick  
Josephine Luicci  
Near and Far Aid  
RobyDodd Family Charitable Foundation, Inc.  
Thomas C. Bishop Charitable Trust  
Town of Newtown  
Union Savings Bank Foundation, Inc.

## Benefactor \$5,000+

The Barden Foundation  
The Barker Welfare Foundation  
The Benevity Community Impact Fund

Melissa and David Beylouni  
Branson Ultrasonics Corporation  
Gregory Chapman  
Connecticut Community Foundation  
Sean Finan Deakin  
Courtney and Robert Elliott  
Elizabeth Ellis  
Fairfield County Bank  
The Farrells, Inc.  
The George Link Jr. Charitable Trust  
Annmarie and Michael Gilligan  
George Mulvaney  
Newtown Savings Bank  
The Petit Family Foundation, Inc.  
Lizette and Cory Plock  
Reynolds and Rowella  
Anne Roby  
John Royce  
Think SISU  
Wells Fargo Foundation  
YourCause, LLC

## Advocate \$2,500+

Kim and Ken Adams  
Nina and Charles Allred\*  
Anonymous  
Kristin and Darren Beylouni  
Lesley and Bob Burke  
Erin Bryne and Robert Holmqvist

Rebecca Ciota  
Cotton Candy Fabrics, Inc.  
Donna Crane  
Eric and Jean Eggan\*  
Floritas Kornhaas and Company PC  
Jennifer and Joe Garbus  
George A. & Grace L. Long Foundation,  
Bank Of America, N.A., Trustee  
Tanisha Gladney  
Gloria Gray Foundation, Inc.  
The Goldstone Family Foundation  
Tony Haddad  
Janet Hoyt  
J. McLaughlin  
Bruce McNevin  
JW Leahy Foundation  
Mary Kiniry\*  
Colleen McDonnell  
Mutual Security Credit Union  
Newtown-Sandy Hook Community Foundation, Inc.  
Newtown School District  
Paypal Charitable Giving Fund  
Greg Pepin  
Karla Santore-Murtaugh  
Robert Schoff  
St. Rose’s Church, Social Concerns Committee  
Edward Steinmetz  
Carol and John Stetson  
Allison & Jon Stockel  
Town Fair Tire Foundation  
Union Savings Bank  
Whole Foods Market Community Giving Program  
Dianne and Robert Yamin  
Virginia and Roy Young  
YourCause, LLC

## Patron \$1,000+

Augusto DaSilva Enterprises LLC\*  
Carl Bailey  
Laura and Irving Becker\*  
Annissa Bedoukian  
Brenda and Dan Berta  
Dayna Beylouni



\*Current Members



### Patron \$1,000+

Margaret Bigham  
 Amanda Bristol  
 Greg Budnik\*  
 Candlewood Valley Pediatrics  
 Canterbury School  
 Pamela Chapman\*  
 Arthur Ciccolo  
 Laura Cococcia  
 Linda Cummins  
 CyberGrants  
 Ken Devino  
 Anita and Nicholas Donofrio  
 E-Trade Financial  
 Danielle and Scott Edwardson  
 Elizabeth Ellis  
 Frank Fanella  
 Fidelity Brokerage Services  
 First Congregational Church  
 Linda Frischkorn  
 Susan Gessner and Charles Robbins\*  
 Jordan Gilchrist  
 Liz and Steven Goldstone\*  
 Kathleen Graham  
 Serafina Greco  
 Evan Hack and Diane D'Isidori\*  
 The Helen Breznicky Testamentary  
 Charitable Trust  
 IBM Employee Services Center  
 Impact Fairfield County  
 Jewish Communal Fund  
 The Jewish Federation of  
 Western Connecticut

John Katz  
 Graves Kiely  
 King Street United Church Of Christ  
 Barbara Klebanow Feinson  
 Virginia and Mark Konopka  
 Julie Kushner and Larry Morgan  
 Paul Fiedler\*  
 Golf Quest  
 Mary and Jim Himes  
 Kathy and Robert Kornhaas\*  
 Issac Lam  
 Lynn Leritz  
 Frank Malone  
 Barbara Manners and Morgan Weber  
 Peggy and Rudy Marconi  
 Colleen McDonnell  
 Michele McLaughlin  
 The McMaster Family Foundation  
 Xiomara McNab  
 Catherine Moraetis  
 Martin Morgado  
 Charles Hugh Moretz  
 Morgan Stanley Global Impact  
 Funding Trust  
 Dee Moro  
 Mulvaney Mechanical Inc.  
 Mark and Deb Nolan  
 The New York Community Trust  
 Jonathan Novitski  
 Nuvance Health  
 Olde Crabs Hockey Club, Inc.  
 Peale Foundation  
 J. Markham Penrod\*  
 Jesse Lee Church  
 Town of Brookfield  
 Town of New Fairfield  
 Jeannie Rehnberg  
 Ridgefield Glass  
 Ridgefield Rotary Club  
 Stephen Ross  
 Susan Rowe  
 Andy Sachs - Around Town Realty  
 Geraldine and Dave Schneider  
 Brenda and Henry Schultz\*  
 Eileen C. Seaman, Esq.  
 Seventy2architects  
 Shoes N More of Greenwich  
 Alexa and Gary Skalandunas\*  
 Brian Spiller  
 Jane Steinberg and Alan Kraut  
 Town of Redding\*  
 Carol and Richard Vazzana\*  
 Margaret Vernet  
 Faye and Jerry Walton  
 Western Connecticut State University  
 Foundation, Inc.

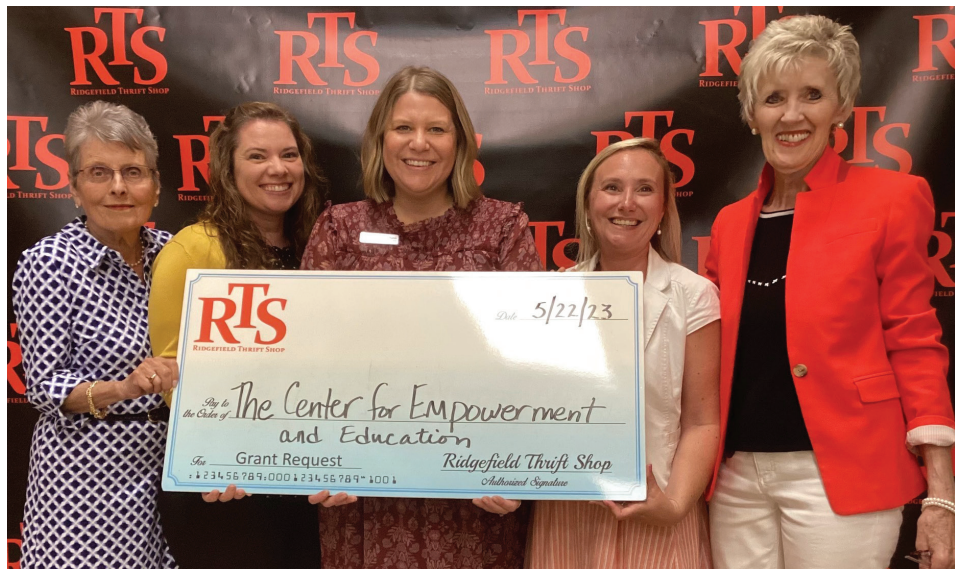
The Woman's Club of Danbury &  
 New Fairfield  
 Anna Wysowskyj

### Friend \$500+

AmazonSmile Foundation  
 Gail E Anderson  
 Sandra Anderson-Howell  
 Bank of America Employee Giving  
 Program  
 Videen and Christopher Bennett\*  
 Danielle Beylouni  
 Boehringer-Ingelheim  
 Kathleen Bowlby  
 Manuel Bravo  
 Beth Briggs  
 Daniel Campbell  
 Mary Campbell  
 Steven Carlson  
 Dan Carter  
 Collins & Associates, LLC  
 Collins Hannafin, P.C.  
 Congregational Church of New Fairfield  
 Gregory Corso\*  
 CT Braces, Danbury Orthodontics  
 Kathleen and Harry Dayton  
 Edward Jones  
 Fairfield County Community Foundation  
 Fairfield Processing Corporation  
 Rita Farhat  
 First Congregational Church of Ridgefield  
 John Fletcher  
 Renee Fozouni  
 David Fredette  
 Frontstream Comprehensive Distribution  
 Kate Furrer  
 Andrea Gartner  
 Susan Gallucci-Bellamy  
 GE Foundation Matching Gifts Program  
 Linda and Charles Gliedman  
 Rhonda Rand Hill  
 Mary Ann Houser\*  
 Reed Idriss  
 J. Mulvaney Plumbing & Heating, Inc.  
 The Jean Widmark and Richard Widmark  
 Foundation, Inc.  
 Joe's Salon & Spa  
 Katherine Kohrman and Meyer Glaser\*  
 Virginia and Mark Konopka  
 Michelle Krausche  
 Legal & General Retirement America Inc.  
 Lions Club of Ridgefield, Inc.  
 Lions Club of Washington, Inc.  
 Litchfield Crossing, LLC  
 Melina and Jared Lynch  
 The M&T Charitable Foundation

\*Current Members

Paul Matchen  
 Debra Jo and John McCarthy  
 Kerry and Brenda McKinley\*  
 Chelsea and Karl Murphy  
 Katherine Naishtut  
 Network For Good  
 Norbert E. Mitchell Co., Inc.  
 Daniel and Annette O'Brien\*  
 Oak Ridge Waste & Recycling  
 Daniel and Annette O'Brien  
 Curie Orero  
 Cathy Palardy  
 Pamby Motors  
 Patrick Foundation  
 Joanne and John Patrick  
 Kelly Pellizzari  
 Jo-Anne Price  
 Kurt Raschi and Catherine Riordan  
 Margaret Reed  
 Frederick Samoskecvich  
 Mary Reby  
 Justin Reed  
 Lawrence Reilly  
 Renaissance Charitable Foundation, Inc.  
 Michael Rettger  
 Ridgefield Police Benevolent  
 Association, Inc.  
 Joan and Leonel Rodriguez\*  
 Karen Ross  
 Rachel Ruth Rothschild  
 Barbara Safran  
 Joshua Salit  
 The San Diego Foundation  
 Emma Schweder  
 Louis Sclafani  
 Schwab Charitable Fund  
 Donna Sexton  
 Shir Shalom  
 Stephen and Anita Skor  
 Polly and Joseph Sorrentino  
 St. Rose's Church, Social Concerns  
 Committee  
 Joe Sullivan  
 Vicki Taylor-Bloch  
 Temple B'Nai Chaim\*  
 Town of Sherman  
 Howard and Wendy Tuthill  
 Patricia Van Buren  
 Barbara Volz  
 Stephanie Wanzer  
 Adrian Windham  
 Western Connecticut State University  
 The Wolverine's Foundation Inc.  
 Women's Club of Brookfield  
 Karen Zeilnhofer



### Sustainer up to \$499

AARP Chapter 1067  
 Alix Abbamonte  
 Matthew Abel  
 Elliot Abramowitz  
 Dorothy Adams and Josephus de Groot\*  
 Svitlana Afanasieva  
 Deborah and John Ahle  
 Sana Ahmed  
 Cosmo and Nancy Alberico\*  
 Jackie and Gale Alexander  
 Tina Allegrezza  
 Allen Kardec Spiritist Center of Danbury  
 Sanaa and John Almarayati  
 Jessica Amante  
 Katrin Ambroladze  
 Carrie Amorosa  
 Michael Anderson  
 Michael and Barbara Anderson  
 Anonymous  
 Esteban Antman  
 David Arconti\*  
 Brian Armstrong  
 Francis Armstrong  
 Majeed Asim  
 Atlas Air, Inc.  
 Jacqueline Aveiga  
 Sherri Axcell  
 Ted and Ronni Backer  
 Lauren Bailey  
 Carl Bailey  
 Kenny Ballentine

Carolyn Balmer  
 Theresa Barb\*  
 Bogues Barbara  
 Jamie and James Barbarie\*  
 James Barnett  
 Kim Bartolomeo  
 Avery Baum  
 Karen Baumgartner  
 Be Yoga  
 Meghan Behnke  
 Peter Belechak  
 Jane and Joseph Belsky  
 Benay Enterprises, Inc.  
 Aunt Sandy Bennett  
 Bob Benoit  
 Marc Bensimon  
 Michael and Carlyn Bergman  
 Maura Bergman  
 Julie Bernstein  
 Garrett Bernz  
 Bethel Women's Club  
 Mary Betz  
 BevMax International, Inc.  
 Margaret Bigham  
 Kara Bingham  
 Margie and James Blansfield  
 Theodore Blum\*  
 Florencia Boates  
 Peter Boccarossa  
 Hanna Bogues  
 Beth Bogues  
 Kellie Boland

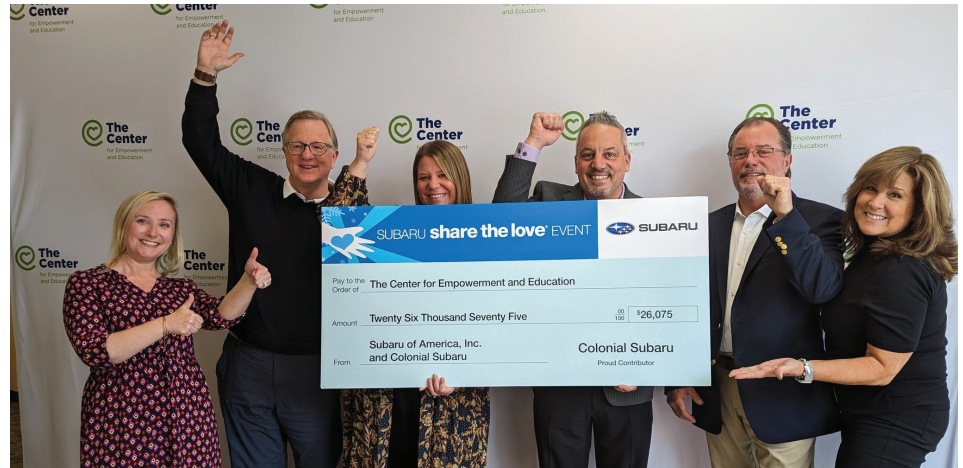
\*Current Members

## Sustainer up to \$499

Heidi Bonilla  
Jeff Bonistalli  
Michele Bonvicini  
Charles Borchetta  
Kathleen Bowlby  
Beckett Boyd  
Joan Gereg-Bradley\*  
Olivia Bragoli  
Branchville School PTA  
Arvid Brandstrom  
James Brawley  
Claudia P Braz  
Anne Brecher-Bogart\*  
Laura Brennan  
Bridgewater Congregational Church  
Barbara and Dana Briggs  
Joseph Briggs  
Amanda Bristol\*  
Gina Brito  
Luisa and Scott Britton  
Simon Broomhead  
Betty Gray Brown  
Denny Brown  
Janice Brown\*  
Margaret and William Brown  
William N. Brown  
Lois Buchanan  
Cynthia Buczek  
Taylor Budnik  
Alexis Burch  
Carol Burdett  
Matthew Burke  
Jessica Burke  
Kim Burkes  
Mary Burnham\*  
Judith Burroughs\*  
Diane Butera  
Kelly-Ann Cagianello  
Bobbie Cahill\*  
Elké Calero  
Cynthia Calitri\*  
Jean Campbell  
Elizabeth Candler  
Candlewood Center For Women's Health  
Janine Capanna  
Robert Caponetti  
Monica Caporaso  
David Cappiello  
Keri Cappiello  
Jill Carabelli  
Georgia Carrington  
Mary Carroll  
F. Elizabeth Casey and James Moore\*  
Lorraine Catalano  
Robyn A. Cerasoli\*

Sandy Chadwick  
Thomas Chapman  
Charym Yoga Studio  
Kevin Chittenden  
Jennifer Choi  
Kim Chu  
CironeFriedberg, LLP  
Joseph Cleary  
Douglas Clement  
Aryn Cluney  
Sofia Cluney  
Haley Cobb  
Nancy Cockowski  
Laura Cococcia  
Coin Up  
Christine Colby

Solimine Contracting\*  
Susan Conway  
June Cook  
Douglas and Kathleen Coombs\*  
Simon Cooper  
Andrea Coreau  
Lori Correnthal  
Gregory Corso  
Matt and Alice Corso  
Patricia Cosentino  
Alice Cosentino  
Costco Wholesale  
Barbara Cottingham and Bernard Yemc\*  
Michele Cousens  
Anne Coviello  
Erin Craig



Ed Coleman  
Jeanne Colin  
Jennifer Collins  
Laura Collins  
Rosemary Collins  
Valerie Collison  
Colonial Cleaners (K.P.D.J., Inc.)\*  
Colonial Subaru  
Anthony Concolino  
Kate Conetta  
Gail Conetta  
Connecticut Realtors  
Dolly Connor  
Megan Connors  
Cary Conroy  
Carolyn Conroy  
Sally and John Conroy\*  
Cary Conroy  
Mary Consoli  
Clark Construction

Donna Crane  
Christine Creter  
Susan and Tom Crumb  
John and Celia Cuk\*  
Margaret and Thomas Cunningham  
Kim Cunningham  
Karen Curry  
Helen Curtin  
James Dalkiewicz  
Nicole Daly  
Danbury High School Student  
Activity Fund  
LouAnn Daprato  
William Davidson  
Susan Davis-Gillis  
Nancy Day  
Kate Dayton  
Cantor Debra Katchko-Gray and  
Dr. Frederick Scott Gray  
Dawn and Michael DeCosta

\*Current Members

## Sustainer up to \$499

Laura Deeks  
Christine Deep  
Margaret deMaille  
William DeMichiel  
Allison DeNicola  
Rick Depalma  
Michael DePaul  
Vicki Derderian  
Susan Derek  
Eleanor Derwin  
Lorpu Dery  
Maureen Devane  
Rose Marie DeVito\*  
Diamond Contracting LLC\*  
Ivette E. Diaz M.D., LLC  
Stevie D Entertainment and Jenny Diaz  
Dan DiBouno\*  
Melanie and Anthony DiCaprio  
Elaine and Paul Dinto  
Bobbie and Brian Dobson  
Susan Dodd  
Betty Dodson-King  
Joseph Dolan  
Michael Dolber  
Stephanie Dolph  
Donnelly, McNamara and Gustafson  
Anita and Nicholas Donofrio\*  
Susan Dorenbosch  
Maria Dorso  
Beth Doughten  
Beth Doughten  
Elizabeth Doyle  
Laurel Draper  
Darleen Driver\*  
Laurie Ducey  
Ritu Duenwald  
Ritu Duenwald  
Ryenne Duffy  
Ashley Dunn  
Judy Durkin  
East Ridge Middle School  
Eddie's Pizza and Pasta  
Maureen Edwards  
Elizabeth Edwards  
Danelle Egan  
Nelson Ehinger  
Patricia Carol Eisen  
Barbara Eler\*  
Pamela Elkow  
Robert Elliott  
Kathleen and David Elmore\*  
Kristin English  
Lorraine English  
Colleen English Ross  
Matilda Ennis



Lisa Esneault  
Ann and John Faraguna  
Justin Fargione  
Devon Febbraio  
Kristin Fedders  
Maureen Ferguson  
Susan and John Ferguson  
Jill Fernandez  
Jackie Fernandez  
Jillian Fernandez  
Beth Ann Fetzer\*  
Paul Fiedler  
Linda Fields  
Christine Filanowski  
Sarah Finbow  
Ronaldo Fiorentino  
Aubrey and Scott Fitch  
Rosalie Fitzgerald  
Kevin Fitzpatrick  
William Fletcher  
Tom Floros  
Samantha and Rob Flynn  
Rose Fogelman\*  
Christie Fogelstrom  
Suzanne Fogle - Westbrook Nature School  
Susan Forbes  
Nicole Fortson  
Ellen Fox-Snider  
Dave Frattaroli  
Eileen Frattaroli  
Don Frattaroli  
Greg Frattaroli

Lily Fratto  
David Fredette  
Toni French and Michael Zottola  
Jacqueline Fresenius  
Natalie Freyer  
Megan Freyer  
Linda Frischkorn  
June Frost  
Grace Frost  
Nancy Gade  
Cynthia Gaffney  
Sarah Ganong  
Claire Garcia  
Maria Gardell  
Pamela Gardner\*  
Maya Gat  
Jennifer Gauthier  
Christian Geiger  
Laurie Gelderman  
Leslie Gera  
Theresa Giberson  
Jordan Gilchrist  
Joyce Giordano  
Give Lively Foundation  
GiveGab  
Caryn Goessman  
Esther Goldman\*  
David Goldsmith  
Irv Goldstein  
Rainer Gonet  
Emma Goodacre  
Emma Goodacre  
Maria Gorniakova  
David and Sandra Graham  
Steve Graham  
Daniel Granucci  
Aimee Grant  
Caitlin Schneider Granucci  
GRC Wireless, Inc.  
Bruce Green  
Mary and Thomas Green\*  
Joan Green  
Tricia Gregory  
Amy Greiner  
Abby Grenier  
Russell and Judith Griemsmann  
Vanessa Gronbach  
Linnea Guarino  
Kenric and Katherine Gubner\*  
Deborah Gundel  
Carol Gurski  
Rex Gustafson  
Katharine Gwin  
Donna Haas  
Evan Hack and Diane D'Isidori  
Patra Hadley

\*Current Members



### Sustainer up to \$499

Katelyn Hall  
 Khristine Hall  
 John Hamilton  
 Martin Handshy  
 Jeanine Hanewicz  
 Joseph and Katherine Hanley  
 Kathleen Hansen  
 Janet Happel  
 Maria Hardin\*  
 Sean Hargraves  
 Jean Hartnett\*  
 HARTtransit  
 Catherine Hartwig  
 Lisa Hartwig  
 Patricia Harvell  
 Larry Haslam  
 Dennis Hattie  
 Mary Hattie  
 Ann Hauck  
 Ryan Hawley\*  
 Leah and Jon Hayner  
 Marybeth Healey  
 Charles Justin Henck and Maya Dimitrova  
 Judy Heise  
 Mary Jean Heller  
 Jordan Hellman  
 Nicole Maria Henley Nilsen  
 Betty Hensal  
 Geoffrey Herald\*  
 Natasha Hercules  
 Hattie Herman  
 Laura Herrmann  
 Sabine Heym-Kloeckner and  
 Kristof Kloeckner

Joseph Higgins  
 Elizabeth Higgins  
 Allen Hindin  
 Nancy Hirsh  
 Mary Hoermann  
 Robyn and Nicholas Hoffma  
 Melissa Hollen  
 Letha Holmes  
 Daniel Homes  
 Gregory Horne  
 Sharon Hoverman\*  
 Krysta Howie  
 Melanie Howley  
 Sue Hruby  
 Alex Huang  
 Leah Hushion  
 Linda Hutchings  
 Reed Idriss  
 Deanne Isaacson  
 J. Rouge Fitness LLC  
 Pitney Bowes Foundation  
 Emily Jackson  
 Kerri Jackson  
 Scott Jackson  
 Emily Jackson  
 Mary Ann Jacob  
 Margot Bradley Jacobs\*  
 Candlewood Tool & Machine Shop, Inc.  
 Carly Jacques  
 Melissa Jalbert  
 Joan M. Jannetti  
 Meri Jitsukawa  
 Nancy John  
 Janine and Penn Johnson  
 Carol Johnson\*

Kate Johnson  
 Robert Jones  
 Maura Juan  
 Angela Kane  
 Isabel and Barry Kaplan  
 Jacquelyn Kaplan  
 Dorothy and Edgar Kastner  
 Cathy Katin-Grazzini  
 Joanne and Richard Keever  
 Ginny Keim  
 Pat Kelley  
 Kristina Kelly  
 Manny Kennedy  
 Edward Kennedy  
 Manuela Kennedy  
 John Kenny  
 Diana Kessler  
 Margaret Kiely  
 Rosanne and John Kiley\*  
 Nancy King  
 Susan and Bert King  
 Nancy King  
 Donna Kirchner  
 Cathy and Peter Klein  
 Diane Knapp  
 Beverly and Marvin Knisley  
 Kiera Knox  
 Rosaria Konstantin  
 Deborah Kornin  
 Raymond Kostka  
 Brittany Kowalski  
 Michelle Krausche  
 Lauren Krayeski  
 Joseph Kreitz  
 Judith Kriegl\*  
 Barbara Krier  
 Julie Kushner and Larry Morgan  
 Anna LaBanca  
 Wendy LaBarge  
 Paul Lagas  
 Roger LaGratta  
 Audrienne A. Lahoud  
 Shelli Lalime  
 Philip LaPorte\*  
 Matthew Larson  
 Catherine Larson  
 Christopher Lathrop  
 Erica Lauer  
 Brian Lavoie  
 Pat Lazzari  
 Glen Leblanc  
 Lisa LeBlanc  
 Christine and Carl Lecher  
 Mary Lee and John Roulat  
 Laura Lee  
 Melissa Lefflbine

## Sustainer up to \$499

Janice Leggett  
Barbara Lehman  
Gary Lehman  
Pink Lemon  
Michael Lengel  
Lenore and Sydney Bland Charitable  
Foundation  
Lisabeth Lent  
Pamela Lester  
Warren Levy  
Rachel Lewis  
Beth Lighthouse  
Patricia Linnon  
Wendy and Mark Lionetti  
Tanya Little  
10 South LLC  
Diamond Contracting LLC  
Collins & Associates, LLC  
Cassio Kennels, LLC\*  
AFSCME Local 2663  
Walter and Eleanor Loesch\*  
Meghan Logan  
Michele Logan  
James Lohr  
Nicole Lodom  
Teresa Looney  
Mary Lord  
Patricia and George Lowell  
Shelley Lowenstein  
Janet Loya  
Janice and John Lucchesi  
Sandra Lugar  
Michelle Luis  
Clementina Lunar  
Kathleen A. Lynch\*  
Kathryn Macaulay  
Dennis and Sheila Macauley  
Jane MacKenzie\*  
Laurie and Greg MacKenzie  
Cara Mackler  
Jill Maguire  
Noreen Maier  
Barbara Maisonpierre\*  
Anthony Maki  
Gail Maletz\*  
Alan Mandel  
Danielle Manner  
Victoria Mantie  
Marble and Granite Creations  
Brendan March  
Lyn Marchellos  
Sue Marcinek  
Tarrie and Steven Marhefsky  
Lauren Mariani\*  
Joanne Marino and Patricia Riska\*

Parma Market  
Dina and Samuel Markind\*  
Wendy Marshall  
Vacuum Mart  
William and Jennifer Martin  
Terra Martin  
Ashley Martinez  
Eimy Martinez  
Raymond and Marie Martucci  
Rebecca Maruthelil  
Kathleen Mason  
Jennifer Matlack  
Robert and Jennifer Mayette  
Linda McCaffrey  
Deirdre McCann  
Davin McCarthy  
Theresa McCleary  
Molly McCleary  
Michelle McCourt  
Kathleen McDonald  
Linda McDonald  
Colleen McDonnell  
Thea McGee  
Desmond McGoey  
Betsy and Paul McIlvaine\*  
Tom McInerney  
Monica McInerney  
Michele McLaughlin  
Michael McMahan  
Doreen McManus  
Lisa and Patrick McMinn\*  
Milo and Stella McNugget  
Jim and Diane McNulty  
Mediassociates  
Cindy Meehl  
Susan and John Melillo\*  
Karen Memoli  
Nancy and Jeffrey Metzger\*  
Hannah Mikesell  
Cara Milhaven  
Dorothy Milovic  
Marie Miszewski  
Megan Mitchell  
Marla Monahan  
Satil Moni  
Jeffrey and Charlotte Monroe\*  
Jeffrey Monroe  
Montanari Fuel Service, Inc.\*  
Helga Moody  
Patricia Moore  
Melisa Moreau  
Hannelore and Daniel Moreno  
Dee Moro  
Jacqueline Morrison  
Monica and Skip Morton  
Debra Morton

Haley Morton  
Gary Mummert  
Kathleen and Paul Murphy\*  
Antonia Nabholt and George Huse  
Katherine Naishtut  
Jennifer Nash  
Mary Neal  
Matthew Neligan  
Richard Nelson  
Ryan Nelson  
Marcia Nelson  
Jonathan Nelson  
Candice Nelson  
Sherri Nelson  
Mark Nelson  
Bruin Nelson  
Chip and Pam Neumann  
New Beginnings Landscaping, LLC  
Dan Newton  
Bridget Nicholson  
Sharon and James Nisch\*  
Stephen Nitz  
Jack Nix  
Norbert E. Mitchell Co., Inc.  
Dorothy Norman\*  
Northern Fairfield County Retired  
Teachers Association  
Northville Volunteer Fire Department Inc.  
Elvis Novas and Zaraida Cabrera  
Elizabeth Nunan  
Heather Nunes  
Anna Ochs  
Jennifer Ochs  
Anna Ochs  
Susan Ochs  
Kelly O'Connell  
Linda OConnor  
David Oltman  
Rachelle O'Marra\*  
Carol O'Meara  
One Hope Foundation  
Danette Onofrio  
Curie Orero  
Patricia and Paul Orsino\*  
Gina Ostergard  
Marjorie Overmier  
P.E.O. Sisterhood CT Chapter G  
P.W. Scott Engineering & Architecture  
Ellen Pacelli  
Babette Palmer  
Cynthia Palmer  
Margaretha Palmer  
Ashley Paltauf  
Kristen Papucci  
Kiritharan Parankirinathan\*  
Rosemary and Thomas Pardalis

\*Current Members

## Sustainer up to \$499

Tanya Parker  
Pastore & Dailey LLC\*  
Paypal Charitable Giving Fund  
Vincent Pelusio  
Angela and David Pennucci\*  
Lee Penyak  
Davida Pepe  
Dina Pereira  
April Perez  
Kate Perry  
Debbie Perry  
Elizabeth Petrone

Mary Laura Pritchard  
Professional Water Systems  
Alex Prokopczyk  
Perri Prosky  
MaryBeth Prunty  
J. T. Pryor-Bennett  
The Blazer Pub  
Mary Alice Putnam  
Linda Queiroz\*  
Olivia Quinsland  
Julia Radko  
Maureen Raftery  
Iris Rainone and Gary Mummert

Rhonda Remillard  
Jennifer Retter  
Christina Reynolds\*  
Shirley Ricart  
Michael Rickicki  
Ridgefield Cleaners  
Jennifer Riley  
Lori Ritter  
Dawn Rivers  
Paul Rizzo  
Roberta Robbins  
Carol Robertson\*  
Pamela Robey  
Alexander Roche  
Rogers Park Middle School  
Roland Roman  
Christina Ronac  
Robert Ronan  
Sharon Rosenblatt  
Beth Rosenfield  
Daniel Rosenthal  
Paulina Rosetti  
Betty Ross  
Ronnie Ross  
Ana Ross  
Suzanne and John Rossi  
Ellen and Dan Rossini  
Dale Rothbell  
Allison Ruiz  
Laura Russell  
Julia Ryan  
Alaina Ryan  
Nancy Ryan and Susan Rosengrant  
Alaina Ryan  
Thomas Saadi\*  
David Sachs and Linda Shackelford  
Sofia Salgado  
Maureen Salerno  
Sofia Salgado  
Lynne Salierno  
Melissa Salierno  
Gail and Chip Salvestrini\*  
Donna and Steven Sanford  
Edmund Santopietro  
Theresa Santoro  
Farley Santos  
Eleanor Saperstein\*  
Hillary Sarrasin  
Lisa Scails  
Louis Sclafani  
Frank Scalzo  
Donna Scalzo  
Steven Schacter  
Cathy Schaefer  
Yvonne Schapiro  
Elisaha Schecter



Reese Pettitt  
Cynthia Pezzullo  
Jenny Phair  
Caroline Pheeney  
Lynne Phillips and Charles Manos  
Marlene Piche  
Carla and Mark Pierce  
Lori Pizzoli  
Pledge aka Pledgling Foundation  
Amy Polacko  
Douglas Polistena  
Cheryl Pollack  
Michele Pollock  
Margaret Powell  
Maxine Prange  
Sanjula Praveen  
Laura Pretka  
Julia and Leigh Price  
Daniel Primavera  
Jessica Principi

Madeline Raleigh  
Michele Ramirez  
Emily Ramirez Holt  
Amy Read  
JoAnne Read\*  
Redding Country Club  
Marie Rega  
Kara Regan  
Beverly Regan  
Regional School District 12  
Jeannie Rehnberg  
Mallory Reilly  
Christopher Reinhardt  
Todd Reisel  
Christine Reisel  
Todd Reisel  
Rosamund Reisen  
Leslie and Michael Reiter  
Jodi Rell

\*Current Members



## Sustainer up to \$499

Elisaha Schecter  
Christine Schmohl\*  
Lynn Schneider  
Nancy Schneider  
Anne Schuler  
Maria Schweitzer  
Joanne Sclafani  
Lori Scotto  
Steven Seagriff  
Marilyn Seccombe  
Virginia Seccombe  
Jennnifer Seeley  
Maria Pia Seirup  
Chasty Seramillo  
Myra Serrins  
Chris and Carla Setaro\*  
Lynne Sewell\*  
Donna Sexton  
Mary Pat Sexton  
Patty Sghia  
Kevin Sghia  
Patricia and Kevin Sghia  
Chris Shanahan  
Patricia and Terence Shanahan\*  
Hilary Shapiro  
Laurie Sharinay\*  
Daniel Sheehan  
Lisa Sheridan  
Karen Sherman  
Simone Short  
Theresa Siedlick  
Sharon and Paul Siegel  
Brooke and David Siegel  
Laura Silver  
Corinne Silvert  
Elissa Silvio  
Margot and Jon Simmons  
Beth Simon  
Beth Simon  
Lauren Simpson  
Stacy Singer  
Anne Sisco  
Gary Skeggs  
Stephen and Anita Skor  
Joseph Sladek  
Sabina Slavin\*  
Sandra Slifka  
Debra Zimmerman Slink\*  
Marilyn Sloper  
Rebecca and David Slutsker  
The Congregational Church Of Brookfield  
Deborah Smith  
Hoskins Smith  
Candice Smith  
Kathy Smith

Barbara C. Smith  
Michelle Smith\*  
Kathleen Soares\*  
Solimine Contracting  
Ellen Solomon  
Jessica Solomon  
The UPS Store  
John Sommer  
Polly and Joseph Sorrentino  
Denise Sousa  
Liz Spero  
Brian Spiller  
Kim Spinelli  
St. Stephen's Church  
Kiera Stamp  
Mark Stanton  
Peter and Carole Stathis  
Carole Stathis  
Nancy Stein  
Paul Steinmetz  
Daniel Stepanek  
Julia Stillwell  
Stop and Shop  
Cari E Strand  
King Street United Church Of Christ  
Rebecca Strominger  
Thomas Stubbs  
Michele Sullivan  
Diane Sullivan  
Heidi Sullivan  
Annie Sullivan  
Ann Sunderland  
Alex Suter  
Kara and Douglas Sylvia  
Linda Tartaglia  
Tayberry Properties LLC  
TCM Bank  
David Teggart  
Temple B'Nai Chaim  
Temple Shearith Israel Cantor's  
Discretionary Fund  
Ten South LLC  
Shelley Terry  
Patricia Tharrington  
The Di Salvo Engineering Group, Inc.  
The Newtown Woman's Club  
Joel Third\*  
Edward Thomas\*  
Elaine Thorn  
Terri Tibbatts\*  
Alex Tomas  
Miriam Tomasova  
Dance Tone Sculpt with Linda  
Tooth Fairy Pediatric Dentist\*  
Victor Torchia  
Jean Tuscany

TR Paul  
Keri Tracy  
Ilene Traiger and Joseph Shapiro\*  
Nancy Tramontana  
Claire Trotman  
Julian Trotman  
Kathleen Troy  
Michael Trupiano  
Rosa Turcios  
Maureen Tyra  
Jack Tyransky  
United Way of Massachusetts Bay &  
Merrimack Valley  
Barbara Uziel  
William Valenti  
Valley Presbyterian Church\*  
Anne Vanhentenryck  
Robin VanNess  
Gisella Varsno  
Kathryn J Vecchia  
Kim M. Venterea-Zonenshine\*  
Ventura Law  
Sammy Vertucci  
Victoria's Secret of Danbury  
Leslie Vuilleumier  
Bruce Walczak  
Sara Walden  
Christine Walker  
Mary Ann Walkovich  
Rosemarie and Lewis Wallace\*  
Wendy Wallach-Delucia and  
Michael Delucia  
Vivienne Walsh  
Emily Walsh  
Melba Wang  
The Newtown Woman's Club  
Patricia Warren  
Fanta Waterman  
Anastasia Watson  
United Way of Western CT  
United Way Of Greater Waterbury  
George Weaver  
Melissa Webdale  
Mark Weber  
Lauri and Bert Weil  
Michael and Filomena Weiner  
Patricia and Jay Weiner\*  
Rita Weinstein  
Mary Ann Weisman  
Caryn Wells  
Sharon Wenderoth  
Mark Werner\*  
Eleanor and Ronald Weseloh  
Westside Middle School Academy,  
National Junior Honor Society  
Lynn and Edward Wetmore\*

\*Current Members

## Sustainer up to \$499

Whisconier Village Association, Inc.  
Jefferson and Janice Wiggins  
Tamilia Wihlen  
Amy and Warren Willett  
Maria Williams  
Jennifer Williams  
Katelyn Wilson  
Adrian Windham  
Ken Wipperman  
John Witek  
Frederick Witte  
Mary Ann and James Wohlever\*  
Beverly Wolf  
Robert Wolk  
Women Of The Moose, Danbury  
Chapter 314  
Alison Wood  
Lynn Wunderman  
William Wyman  
Jenifer Wyss  
Dianne and Robert Yamin\*  
Patrice and James Young  
Meredith Youngblood  
Peter Yurkins  
Deborah Zachman  
Patricia Zachman\*  
Cynthia Zane\*  
Donna Ziegler\*  
Maxx Zimmer  
Linda Zito  
Carolina Zumaran-Jones